

# Heather Farm Café

## Children's Menu

### Breakfast

*served until 12 o'clock*

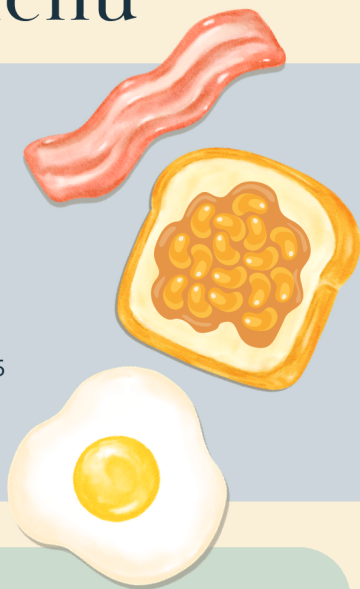
**The Full 'Mini'** bacon, sausage, egg, hash brown, beans & a slice of toast 557kcal 7.95

**V The Full 'Mini Veggie'** plant-based sausage, tomato, baked beans, hash brown, egg & toast 433kcal 7.95

**VEGAN The Full 'Mini Vegan'** plant-based sausage, tomato, hash brown, sourdough toast & baked beans 329kcal 7.95

**VEGAN Beans On Toast** 155kcal 4.25

**V Scrambled Eggs On Toast** 337kcal 4.95



### Lunchtime

*served from 12 o'clock*



**Junior Burger** served with chips & beans 444kcal 7.50

**Junior Cheese Burger** served with chips & beans 674kcal 8.00

**Chicken Goujons** served with chips & baked beans 471kcal 7.50

**V Toasted Cheese Sandwich** melting & delicious 488kcal 5.75

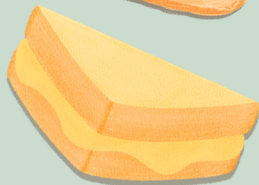
**Kid's Sausage & Chips** with baked beans 585kcal 6.95

**V veggie option available** 459kcal 6.95

**V Kid's Margherita Pizza Slices (4)** hand-stretched sourdough pizza topped with tomato sauce & mozzarella, served with cucumber sticks & garlic & herb dip 464kcal 7.95

**Kid's Ham Egg 'n' Chips** 457kcal 6.50

**Lunch Box** includes raisins, choice of sandwich (**V** jam, ham or **V** cheese), Pom Bears, a piece of fruit & a carton of orange or apple juice, between 514-559kcal 5.95



*For allergen information see our main menu*



## Kid's Pancakes (2) or Waffle (1) with...

### Bacon & Maple-flavoured Syrup

315kcal / 506kcal 6.95

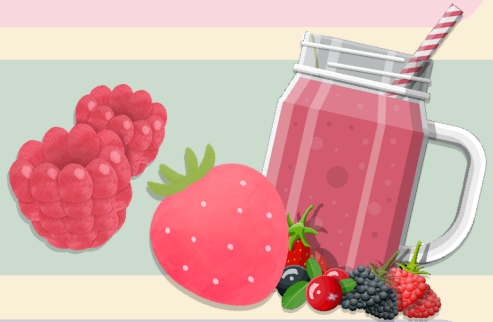
### **V** Fresh Berries, Greek Yoghurt & Honey

281kcal / 459kcal 5.95

## Smoothies

**Mango Mission** mango all the way! 235kcal 5.75

**Very Berry** strawberries, raspberries & blackberries 221kcal 5.75



## Milkshakes

**Cookies 'n' Cream Milkshake** a delicious blend of cookie, ice cold milk & choccy ice cream, topped with whipped cream & cookie crumb 570kcal 5.95

**Strawberry Shortbread Milkshake** fresh strawberries, strawberry ice cream blended with crumbly shortbread, topped with whipped cream 426kcal 5.95

**Biscoff Milkshake** Biscoff sauce, vanilla ice cream & a Biscoff biscuit with whipped cream 582kcal 5.95

**VEGAN Vanilla Caramel Milkshake** vegan vanilla ice cream blended with soya milk, topped with vegan whipped cream & caramel 507kcal 5.95



## Drinks

**Coke/Diet Coke/Sprite 330ml** 140/0/44kcal 3.25

**J2O 275ml** orange & passionfruit 53kcal or apple & raspberry 44kcal 3.65

**Orangina 250ml** 15kcal 3.25

**Simply Fruity 330ml** blackcurrant 15kcal or orange 13kcal 2.75

**Babyccino** frothed milk topped with a sprinkling of chocolate 40kcal 1.50

+ add marshmallows 35kcal 0.35

